

# EVERTOUR

---

## ***TRUCK & BUS TYRE***

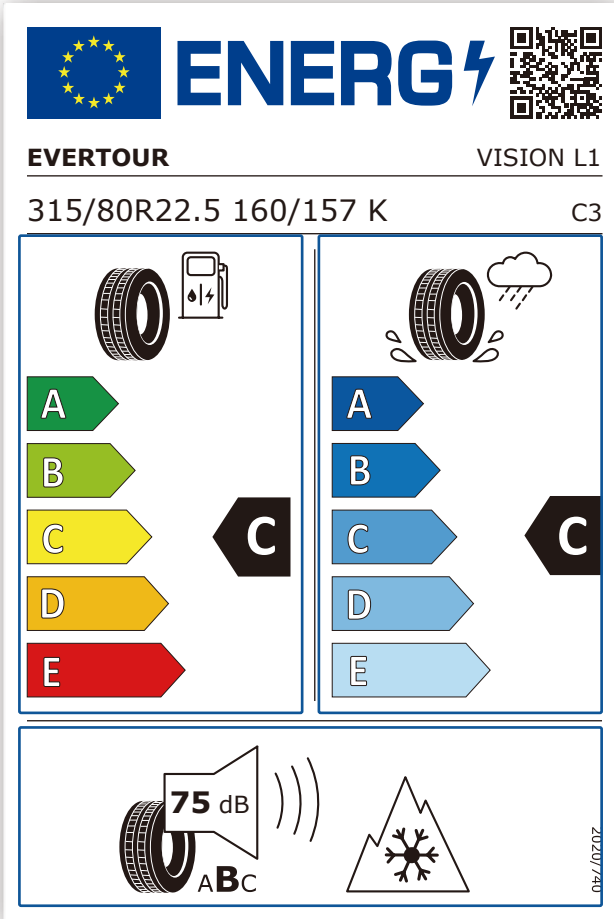
Product Catalogue





EUROPEAN TYRE LABELLING

REGULATION (EC)NO 2020/740



FUEL EFFICIENCY

Indicates fuel economy.

It is ranked from highest to lowest on a scale of A to G.

The fuel efficiency can be improved by up to 20%.



WET GRIP

Indicates braking ability in wet conditions.

It is ranked from highest to lowest on a scale of A to G.

The braking distance can be shortened by up to 30%.



EXTERIOR NOISE

Indicates the noise level outside the vehicle.

The level of noise is indicated by the number of sound wave lines.

The European Union is progressively raising noise standards to reduce noise pollution in the environment.

- 1 black sound wave  
(=3dB already less than the future European limit)
- 2 black sound waves  
(= already compliant with the future European limit)
- 3 black sound waves  
(= compliant with the current European limit)



# Comprehensive Quality Control System



## MATERIAL PERFORMANCE TESTING

AUFINE enhance tire strength by testing tire material performance under extreme temperature conditions in order to improve durability and safety.



## FINITE ELEMENT ANALYSIS

AUFINE test to predict how a new tire compound and tread design will behave under stress in order to improve tire



## FORCE AND MOMENT TESTING

AUFINE put our tires through maximum load tests to determine how stress will affect tire footprint and tire performance.



## NOISE REDUCTION ANALYTICS

AUFINE test tire designs to reduce vibration and tire noise without affecting tire handling or durability.



## RHEOLOGICAL PROPERTY STUDIES

AUFINE evaluate the properties of our tire compounds to determine how they will react to heat, cold, force, weight, and pressure.



## ROLLING RESISTANCE ANALYTICS

AUFINE study tire compounds in order to build tires that reduce the amount of energy required to roll without compromising traction.

VISION R2



R2



- Wide driving surface combined with the high saturation design effectively increases the mileage, which is 10% higher than the previous generation product.
- 3D steel sheet and hidden groove design provide stronger anti-slip performance, making driving safer on rainy days.
- Four-belt structure design provides ultra-high wear resistance and more comfortable driving experience.
- Reinforced design of ST high-strength steel wire and bead provides strong loading capacity and meets high-level use conditions.

Size	P.R.	Load Range	Load Index	Tread Depth		Max Speed mph	Speed Rating	Overall Diameter		Overall Widht		Standard Rim	Max.Tire Load Single				Max.Tire Load Dual			
				32nds	mm			in.	mm.	in.	mm.		lbs.	psi.	kg.	kpa	lbs.	psi.	kg.	kpa
295/80R22.5	20	L	154/150 (152/148)	26.5	21	75	L(M)	41.1	1044	11.7	298	9.00	8270	123	3750	850	7390	123	3350	850
315/80R22.5	22	M	160/157 (157/154)	28.5	22.6	68	K(L)	42.4	1076	12.3	312	9.00	9920	138	4500	950	9090	138	4125	950
315/70R22.5	20	L	156/150 (154/150)	26.0	20.6	75	L(M)	39.9	1014	12.3	312	9.00	8820	130	4000	900	7390	130	3350	900

VISION R5



R5



- Wide-based tire treads and four main groove designs ensure excellent handling and safety.
- Large shoulders and a high wear-resistant formula promote even wear and long life.
- Increased tread width and optimized lug design enhance mileage.
- Widened tire shoulder and special sipes reduce heating and improve precision.

Size	P.R.	Load Range	Load Index	Tread Depth		Max Speed mph	Speed Rating	Overall Diameter		Overall Widht		Standard Rim	Max.Tire Load Single				Max.Tire Load Dual			
				32nds	mm			in.	mm.	in.	mm.		lbs.	psi.	kg.	kpa	lbs.	psi.	kg.	kpa
385/65R22.5	24	N	164(162)	16.5	20.8	62	J(K)	42.2	1072	15.3	389	11.75	11000	138	5000	950	--	--	--	--





# FLYBULL



# TRUCK TIRE

## Product Catalogue



**Super Wear-resistant**



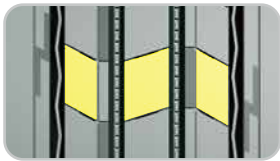
**Anti-clamping Stone**



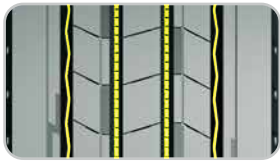
**Anti-eccentric Wear**



**Unique Pattern Design**



Unique pattern design makes the product more beautiful and generous.



The four straight grooves design provides outstanding handling, effectively preventing stones from becoming trapped and improving the tires's self-cleaning ability.



Wide driving surface and deep groove design ensure ultra-wear resistance.

The new exterior design gives the tire a more even distribution of pressure on contact with the ground and a greater ability to resist eccentric wear.



Size	PR	Load Range	Load Index	Speed Rating	Max Speed mph	Tread Depth		Standard Rim	Max Tire Load Single		Max Tire Load Dual	
						32nds	mm		lbs.	psi.	lbs.	psi.
295/80R22.5	20	L	154/149	L	75	20.8	16.5	9.00	8270	123	7160	123
315/80R22.5	22	M	160/157 (157/154)	J(K)	62	19.5	15.5	9.00	9920	138	9090	138
385/65R22.5	24	N	164(162)	J(K)	62	20.8	16.5	11.75	11000	138	—	—

